



Goleta

# DEPOT DISPATCH



Newsletter of the South Coast Railroad Museum  
Volume 25, Number 3 — Fall 2005

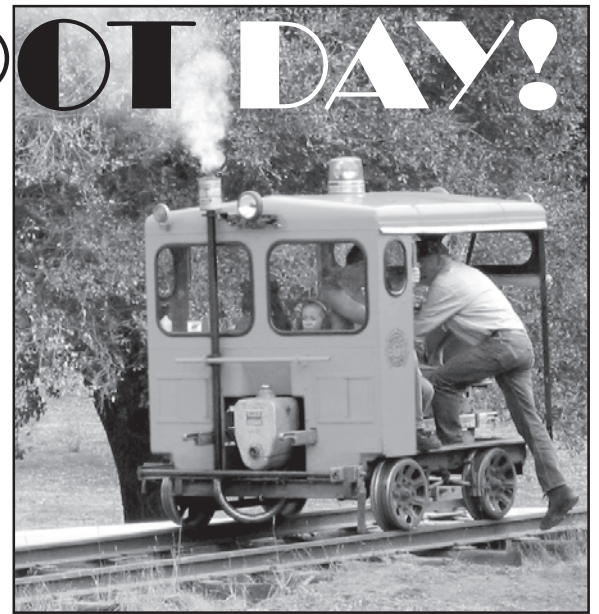
## It's time for **DEPOT DAY!**

The 23rd annual *Depot Day* will take place on Sunday, Sept. 25. *Depot Day* celebrates the history of Goleta Depot, which is listed on the National Register of Historic Places and the California Registry of Historical Resources, and has been designated Santa Barbara County Historical Landmark No. 22.

Featuring a tri-tip barbecue, silent auction and more rides than any other South Coast Railroad Museum event, *Depot Day* is the museum's most important community fund-raiser. The event runs from 11 a.m. until 4 p.m.

### Rail Rides Galore

*Depot Day* is the only occasion during the year when museum guests can enjoy rides on three different types of vehicles that run on rails. Rides will be offered on a historic inspection car, which once ran on the Ventura County Railway. The "speeder" car will be operated by its owner, **Bob Mahan**. *Depot Day* will also feature rides on the museum handcar and on the Goleta Short Line miniature train. All rides are \$1 each on *Depot Day*.



*Bob Mahan will give rides on his inspection speeder.*

### Silent Auction Offers Great Buys, Real Bargains

The *Depot Day* silent auction has been a central attraction of the event for two decades. It was started in 1985, replacing traditional auction and "Unclaimed Freight and Baggage" sales formats. Those in the know have long seen the auction as a great opportunity for picking up valuable goods and services at bargain prices, while helping the museum at the same time.

This year's auction list includes nearly 200 items, including hotel stays, golfing, tickets to performing arts productions, winery tours, Amtrak travel, meals at fine restaurants, and a lot more.

The auction is a primary source of finan-  
(continued on page 2)



*Youthful singers are a Depot Day mainstay.*

## South Coast Railroad Museum Institute for American Research

### Board of Trustees

David Chapman  
Joan Hanna  
Kip Kramer  
Noel Langle  
Bruce Morden  
Richard B. Shelton

### Officers — 2005

Richard B. Shelton, *President*  
Bruce Morden, *Secretary*  
David Chapman, *Treasurer*

### Senior Staff

Gary B. Coombs, Ph.D., *Director*  
Phyllis J. Olsen, *Asst. Director*  
Thea H. Cremers, *Resource  
Development Coordinator*

## Depot Day (cont'd from page 1)

cial support for the museum. Please help by visiting the tables and placing bids on your favorite items.

If you have new items, collectibles or valuable services to donate to the auction, please give Assistant Director Phyllis Olsen a call in the museum office (964-3540).

## Special Guests

**Operation Lifesaver** will have a booth during *Depot Day*. Their representatives will be giving away fun souvenirs that promote safety around trains and railroads. They will also have literature and be available to answer your questions about keeping you and your loved ones safe near tracks, rail yards and railroad crossings.

## Musical Entertainment

Returning to *Depot Day* again in 2005 will be the wonderful young performers of the **Monte Vista Elementary School Choir**, under the direction of **Radu Azdril**.

## Depot Open House

*Depot Day* offers a rare opportunity to see the agent's apartment, a historic area of the depot building that is normally not open to museum visitors.

## Barbecue Offers Yummy Tri-Tip Meal

The ever-popular *Depot Day* barbecue will feature sliced tri-tip, green salad, toasted french bread, and ranch beans.

BBQ tickets are \$8 (\$5 for children under 12) on the day, but they may also be purchased in advance for \$1 less per ticket. Advance tickets are available in the museum's Traskside Shop, (ticket purchases can be made by credit card), or from museum trustees and staff.

All members are encouraged to purchase their tickets in advance.

## Other Refreshments

There will also be hot dogs, snacks, beverages and other refreshments available for purchase during *Depot Day*.

## Train-Action Films

Throughout *Depot Day*, the museum's Gandy Dancer Theater will be featuring films on a wide range of rail topics of interest to all age levels.

## Switching Puzzle

Another popular attraction returning to *Depot Day* this year will be **Bruce Morden's** switching puzzle. The puzzle gives would-be engineers and conductors the chance to test their skills in moving an HO-gauge train through a maze of switches.

## Visitor Center Preview

*Depot Day* guests will also be able to preview the status of the new Visitor Center, which is almost ready for occupancy. Normally closed during museum hours, the Visitor Center doors will be open wide on *Depot Day*.

## Donations Requested At The Door

All *Depot Day* visitors will be asked to make a \$1 contribution per person in support of the museum and the continued preservation of the historical landmark.

## Thank You

*Depot Day* 2005 has benefited from the promotional support of the **Santa Barbara News-Press**, **sbparent.com** and **Venoco**.

## Museum Receives NEH Award

The museum has received a Preservation Assistance Grant from the **National Endowment for the Humanities**. The \$5,000 grant will help the museum develop a long-term conservation plan for its collections.

Assisting in that effort is **Beverly Perkins**, a professional conservator and Western Region Field Service Officer for the San Diego-based **Balboa Art Conservation Center**.

## Free Wednesdays Are Back, Thanks To Bermant Company

**Bermant Development Co.** has generously picked up the option on *Free Wednesdays*, enabling the popular weekly afternoon of free miniature-train rides to resume back in July.

Free Wednesdays will continue until Thanksgiving, when the *Candy Cane Train* takes center stage at the museum. Wednesday free rides are expected to start again in January, however, with **Fairview Car Wash** resuming its sponsor's role.

Museum visitors may ride the train as often they like over the 2-3:45 period during which the rides will be offered. For the safety of our visitors, all train riders must meet the 34-inch minimum-height requirement.

This Issue Sponsored By

# Wilson Printing

**Goleta Depot Dispatch:** Newsletter of the South Coast Railroad Museum.

Published quarterly by the Institute for American Research, 300 North Los Carneros Rd., Goleta, CA 93117-1502.

To contact us:

Phone: 805-964-3540;

FAX: 805-964-3549

E-mail: [museum@goletadepot.org](mailto:museum@goletadepot.org)

Web-site: [www.goletadepot.org](http://www.goletadepot.org)

### Visitor Center Nears Completion

As this issue of the *Depot Dispatch* goes to press, work on the Visitor Center project is nearing completion. All of the exterior work is done, except for painting and rain gutters. On the inside, all of the electrical wiring is in, to be followed shortly by the communications wiring, security, insulation and drywall.

An updated list of all Visitor Center contributors is now available on the museum web site ([www.goletadepot.org](http://www.goletadepot.org) -- click on "Hot Topics").

There will be a preview of the Visitor Center during *Depot Day*, Sunday, Sept. 25.

*The Visitor Center has lights! Ron Koens installs one of the fixtures, July 30, 2005.*



*Tom Brown (left) and Noel Langle (right) apply exterior siding.*



### Wordsworths, Lions, Bank Renew Engine & Car Sponsorships

**Jon and Beth Wordsworth** have renewed their sponsorship of "The Gray Engine," Goleta Short Line locomotive No. 2655. The **Goleta Lions Club** and **Community West Bank** have renewed sponsorship of passenger cars No. 3 and No. 4, respectively.



*Steaming Summer photos, clockwise (from top right): On the table; Station action; Passing trains; Steam display; Double-header; (center): Visitors!*



*Steaming Summer 2005*

# Volunteer News

## Coast Starlight Guides

It's been a rough summer for the volunteers of the *Coast Starlight* program. Amtrak's trains have experienced major delays throughout much of the summer due to Union Pacific trackwork in the Pacific Northwest. The result has been many canceled guide trips, while most of those that were completed required the volunteers to return home very late and frequently by bus rather than train.

Nevertheless, many among the long list of recently recruited guides-in-training have stayed with the program and several of these will soon be graduating to full guide status. Thousands of Coast Starlight summer passenger have enjoyed the programs that we have been able to present. One week during each of the summer months has been devoted exclusively to trips that continue on to Oakland.

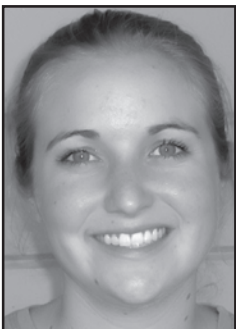
The guides are now using an on-line staffing calendar, available on the museum's web site, that allows them to sign up for *Coast Starlight* trips as well as to prepare and file electronic versions of their trip reports.

## Volunteers At The Museum

Meanwhile, at the museum the focus has been on interns and on training volunteers to be engineers and conductors on the Goleta Short Line.

The museum currently has three new interns from UCSB: **Catherine ("Liz") Anderson**, **Carol Huston** and **Kent Johnson**. A Dos Pueblos High School student, **Ken Roberts** is fulfilling his community service requirement at the museum. All four stu-

*Anderson*



*Johnson*



*Huston*



*Roberts*

dents are involved in a variety of museum activities — sharing the model railroad exhibit, helping with train rides, conducting a visitor survey, scanning historic slides and other computer duties, as well as more prosaic activities.

**Seth Oltizky** has assumed engineer's duties, while **William T. Simpson, Jr.** has begun his Goleta Short Line training. Veteran engineer **Wally Waldau** is helping the museum director with the training of engineers.

*Oltizky*



*Simpson*



## Jr. Engineers Club Party

The annual gathering of the museum's Junior Engineers Club members took place on Thursday, July 14. There were dozens of Junior Engineers and family members at the event, which included plenty of snacks, beverages, and generous slices of the trademark Junior Engineers cake.

Those attending also enjoyed 87 rides on the miniature train.

## Grant Will Help Improve Museum's Volunteer Program

The **Institute of Museum and Library Services** has awarded the railroad museum a grant in its "Museums For America" program. The \$24,000 grant will help us improve and enhance the museum's volunteer program.

Our museum is one of only 169 museums nationwide that received a 2005 Museums For America grant. The program is open to zoos, botanic gardens, science centers and museums of all types and sizes. Ours was the only grant awarded in the Tri-Counties area.

Among those who contacted the museum following the award announcement was U.S. Senator Dianne Feinstein, who congratulated us for our successful effort in this "highly competitive" IMLS grant process.

The grant project will place special emphasis on six key aspects of the museum's volunteer program: recruitment, orientation, continuing education, supervision, evaluation, and volunteer retention.

## Welcome New Members

**William T. Simpson, Jr.** is a new Sustaining member and also a new museum volunteer.

New Junior Engineers include **Sloane Dickens**, **Elena Erskine**, **Sean Erskine**, **Sam Oshinsky Friedman**, **Calvin Hewett**, **Miles Maybrun**, **Alexander Monir**, **Jimmy Monir**, **Alexander K. Moosbrugger**, **Jack Oakes**, **Benjamin Oakes**, **Davis Reinhart**, **Cole Rodin**, **Pearl Schaefer**, and **Kyle Wilczak**.

Welcome to all new members of the museum family!

## Spring Fundraiser Results

More than \$12,300 was raised in support of general museum operations during the Spring Fundraiser. Pledge-getters included trustees **Joan Hanna**, **Noel Langle**, **David Chapman**, **Kip Kramer**, and **Dick Shelton**, and staff members **Phyllis Olsen**, **Gary Coombs** and **Thea Cremers**. Thanks to everyone who donated this year!